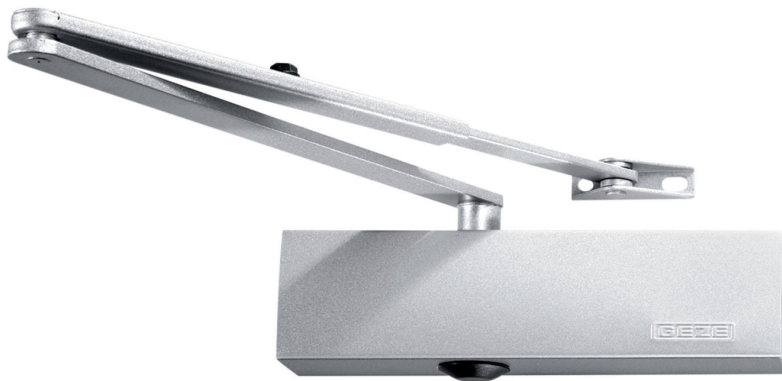


Product data sheet

TS 2000 NV BC

Overhead door closer with link arm for single-leaf doors with a leaf width up to 1100 mm



Product features

- Closing force with variable adjustment from EN2-4
- Can be used for right and left hand doors without conversion
- Integrated back check, slows down doors that are thrown open forcefully
- Hydraulic latching action which accelerates the door shortly before the closed position
- Closing speed can be individually adjusted
- All functions can be set from the front (except for closing force)

Application Areas

- Fire and smoke protection doors
- Right and left single-action doors
- Single-action doors up to 1100 mm leaf width
- Door leaf installation hinge side and transom installation opposite hinge side
- Door leaf installation on the opposite hinge side possible in parallel arm installation

Product Data Table

Product features	TS 2000 NV BC
Leaf width (max.)	1100 mm
Suitability for fire protection doors	Yes

Accessory

Product name

- Cover cap door closer
- Link arms TS 4000/2000 / F
- Link arms TS 4000/2000 / F

Part

Product name

- Link arms TS 4000/2000 / F
- Link arms TS 4000/2000 / F
- Link arms TS 4000/2000
- Link arm TS 4000/2000 elongated
- GEZE TS 2000 NV BC Closer